

A man and a woman are looking at a smart doorbell mounted on a white door. The man is pointing at the doorbell with his right hand, and the woman is looking at it with interest. The doorbell is white with a black camera lens and a blue circular button. The background is a light blue wall with a window.

Doorbell



Ring Doorbell

- 1080p HD video doorbell with enhanced features that let you see, hear, and speak to anyone from your phone, tablet, or PC.
- An upgrade from the original Ring Video Doorbell, enjoy improved motion detection, privacy zones and audio privacy, and dual-band wifi connectivity.
- Receive mobile notifications when anyone presses your doorbell or triggers your built-in motion sensors.
- Powered by the rechargeable battery pack or connects to doorbell wires for constant power.
- Easily setup by connecting your Ring Video Doorbell to wifi through the Ring app and mounting with the included tools.
With a Ring Protect Plan (subscription sold separately), record all your videos, review what you missed for up to 60 days, and share videos and photos.
- Connect your Ring doorbell with Alexa to hear announcements on your compatible Echo device when your doorbell is pressed and see a live view of your camera if you have an Echo device with a screen. Talk to visitors by saying "Alexa, talk to the front door."



"This is for the base doorbell model – please consult your manufacturer for any updated instructions"

How it works.



Detect motion when people come to your property.



Receive notifications on your phone, tablet or PC.



See, hear and speak to visitors in real time from anywhere.

<https://ring.com>

User Guide

Video Doorbell (2nd Gen)

Important New Safety Instructions

1. Set up your Video Doorbell.

Download the Ring app.

The Ring app walks you through setting up and managing your Video Doorbell.

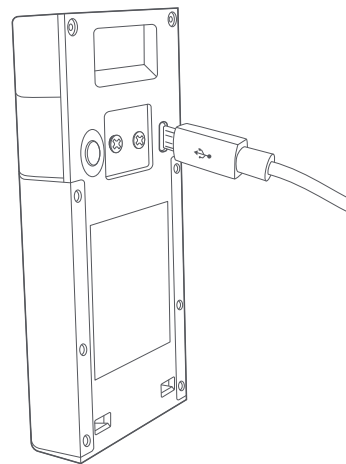
Search for "Ring" in one of the app stores below, or visit ring.com/app



Please make sure you have your wifi password ready for the next step.

Fully charge your Video Doorbell.

Plug it into a USB power source with the included cable. Once the light ring is fully lit, it's ready to use.



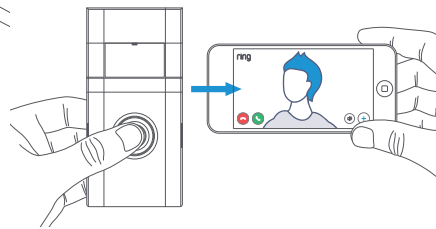
Set up your Video Doorbell near your wifi router.

In the Ring app, select **Set Up a Device**.

When prompted, select **Doorbells**, and follow the in-app instructions.

Try it out.

After setup, push the button on the front of your Video Doorbell to see video from the camera in the Ring app.



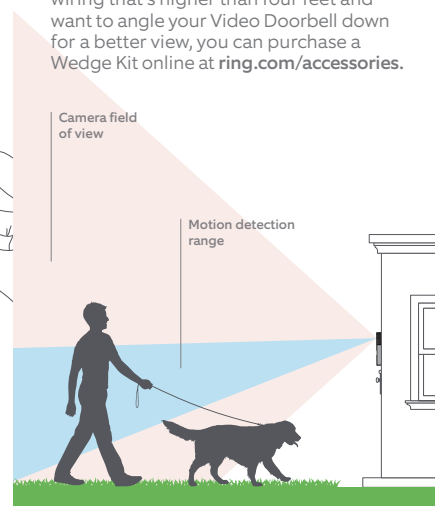
If you have problems with video quality after installation, you may need to move your router closer to your door, or add a Ring Chime Pro. Learn more at: ring.com/chime-pro

2. Install your Video Doorbell.

Set your install height.

Install your Video Doorbell approximately four feet (1.20 meters) above the ground for optimal performance.

If you're connecting to existing doorbell wiring that's higher than four feet and want to angle your Video Doorbell down for a better view, you can purchase a Wedge Kit online at ring.com/accessories.



Steps for wiring to an existing doorbell

Remove your existing doorbell. (optional)

If replacing an existing doorbell, shut off power at the breaker. Then remove it from the wall and disconnect the wires.

Your Video Doorbell is compatible with doorbell systems supplying 8-24 volts AC at 50 or 60Hz, 40VA max.



Do not wire your Video Doorbell to a DC-powered intercom system or other DC power source.

Do you have an in-home chime?

The chime can ring when the button on your Video Doorbell is pressed. Just follow the in-app instructions during setup.

Don't have an in-home chime?

If you see the "No In-Home Chime" button during setup, be sure to press it.

NO IN-HOME CHIME

To change your wiring settings after setup, go to Device Settings > Chime Connection.

Also, consider purchasing a Ring Chime or Chime Pro, which allows you to hear Ring alerts from anywhere in your home.

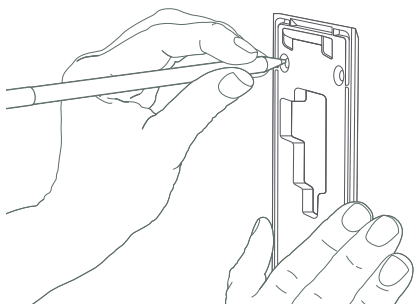
Insert the included mini-level.

This helps to ensure the camera is parallel to the ground when you install your Doorbell.



Mark the screw holes.

Use the bracket as a template to mark the four corner holes. The recommended install height is 4 feet above the ground.



Install the anchors. (optional)

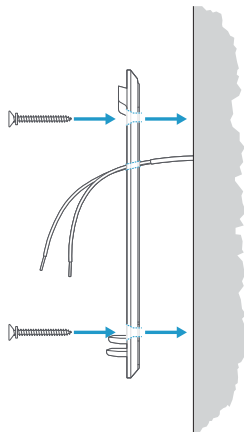
If installing on stucco, brick, or concrete, mark 4 drill holes. Use a 1/4" masonry drill bit to drill holes in your wall, then insert the included anchors.

If you're installing on wood, skip this step.

Install the mounting bracket.

If you're wiring your Video Doorbell, feed your doorbell wires through the hole in the mounting bracket first.

Using a Philips head screwdriver, drive the screws into your wall (or into the anchors, if installed) until they are flush with the mounting bracket.

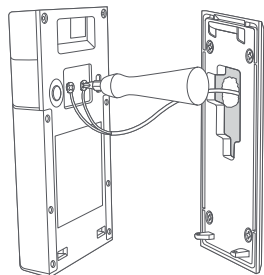


Steps for wiring to an existing doorbell

Connect the wires. (optional)

Connect the wires coming out of your wall to the screws on the back of your Video Doorbell. Either wire can connect to either screw. The order doesn't matter.

Your Video Doorbell is compatible with doorbell systems supplying 8–24 volts AC, 50mA, at 50 or 60Hz, 40VA max.



If wiring directly to a doorbell transformer, connect a 25 ohm, 50W wirewound resistor in series with one of the doorbell wires to protect your Video Doorbell.

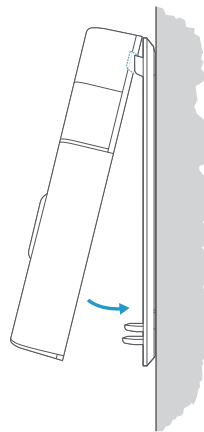


Do not connect to a DC transformer, halogen or lighting transformer, or intercom.

Attach your Video Doorbell to the mounting bracket.

Hook the slot on the rear of your Video Doorbell onto the tab near the top of the mounting bracket.

Then, let the Doorbell pivot down to sit flush on its bracket.



Secure your Video Doorbell.



CAUTION! If you use the wrong screws to secure the Video Doorbell, you could damage the battery during installation, create a fire hazard, and be seriously injured.

DO NOT USE any screw other than the included short security screws when securing your Video Doorbell to the bracket.

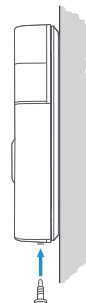
Use the star-shaped end of the included screwdriver to drive the two security screws into the bottom of your Video Doorbell.



Security Screw



Wood Screw



Your Video Doorbell is now ready to use.

If you wired in your Video Doorbell, you can now restore power at the breaker.



For additional help, visit: ring.com/help
Or give us a call:

[US 1 800 656 1918](tel:18006561918)

[Canada 1 855 300 7289](tel:18553007289)

[Worldwide +1 310 929 7085](tel:13109297085)

For a list of all our customer support numbers, visit: ring.com/callus

To review your warranty coverage, please visit ring.com/warranty

© 2020 Ring LLC or its affiliates.
Ring and all related marks are trademarks of Ring LLC or its affiliates.